

User Manual



I-NA203 SATA to USB2.0

Getting Started

Thank you for purchase ineo | I-NA203 product. ineo | I-NA203 SATA to USB2.0 External Storage System. This user manual provides step-by-step installation instructions and other important information regarding your ineo product. For the latest ineo product information and news, please visit our Web Site at <http://www.neo2tech.com>

Package Contents

I-NA203	SATA HDD to USB 2.0
CD	Yes
USB Extension Cable	Yes
User Manual	Yes
ineo Mesh Pouch	Yes



System Requirements

Hardware

Pentium® II, 200 MHz equivalent or newer for IBM compatible PC
PowerPC G4, 350 MHz or newer for PowerPC-based Apple Computer Core® or newer for Intel-based Apple Computer

Software

Windows 98SE / 2000 / 2003 / XP / Vista
Mac® OS X v.10.2+

Note: For highest performance and reliability, ineo recommends that you install the latest service pack (SP) and updates.

Updating Your Operating System

Windows

Go to the Start menu and select Windows updates. For more information regarding updating your system, visit <http://windowsupdate.microsoft.com>.

Macintosh

Go to the Apple menu and select Software Update. For more information regarding updating your system, visit <http://www.apple.com/macossx>.

Handling Precautions

ineo products are precision instruments and must be handled with care during unpacking and installation. Drives may be damaged by rough handling, shock, or vibration. Be aware of the following precautions when unpacking your ineo external storage kit:

- Do not unpack the product until you are ready to install it.
- Do not drop or jolt the product.
- Do not move the external storage when it is powered up.

Setting Up

You will need a 2.5 inch SATA Hard Disk Drive.
Carefully follow the procedure to install the Hard Disk Drive into the enclosure.

ineo | I-NA203 Front View

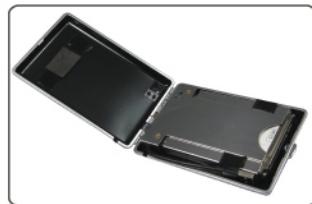


Hard Disk Drive Installation

1. Push the button to open storage case, open the lid and insert 2.5" HDD into SATA connector on disk mounting tray.



2. Please turn the disk mounting tray to down side.



3. Close the upper cover and the external hard disk drive installation process is completed.



Connecting the External Hard Disk Drive

Connecting the Cables

Connect the USB 2.0 cable to an available USB port on your computer.



Windows 2000/2003/XP/Vista

Your operating system will automatically detect the external drive after a "Found New Hardware" message pops up.

Windows 98SE

ineo does not provide any tech supports for Windows 98SE platform since Microsoft has discontinued Windows 98SE.

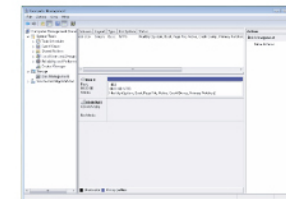
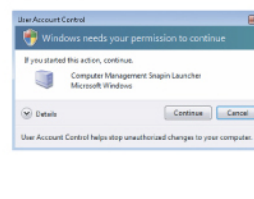
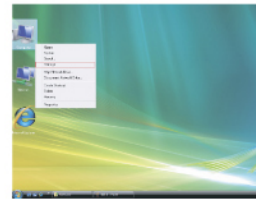
Mac OS X

Your operating system will automatically detect the external drive. Once formatted the Hard Disk Drive, the Hard Disk Drive icon will appear on the desktop.

Partition & Format the Hard Disk Drive

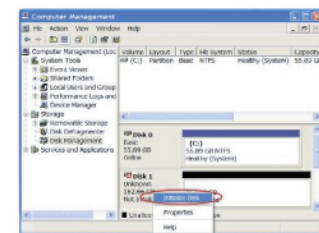
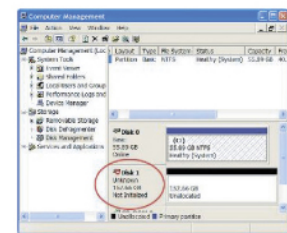
Startup Computer Management from VISTA

- Right click on Computer and select "Manage" from drop down menu.
- Click on "Continue" button from pop up menu.
- Computer Management is ready for use.

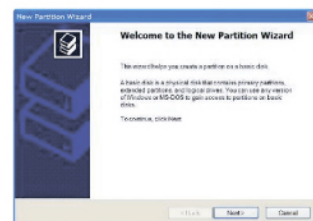


Windows XP/2000/2003/VISTA

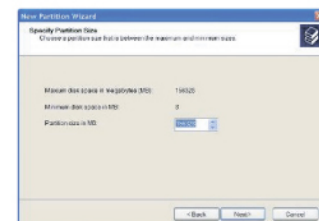
- Click the Start button then choose Setting, and click on Control Panel. Double-click the Administrative Tools, and then double-click the Computer Management.
- Click the Disk Management under Storage. Your new Hard Disk Drive should have the right capacity shown. (E.g. figure above Disk 1 is showing approximately 160GB). Right click the Disk 1, and choose Initialize Disk.



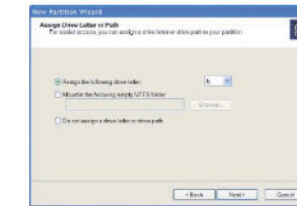
3. After New Partition Wizard launched, then click Next.



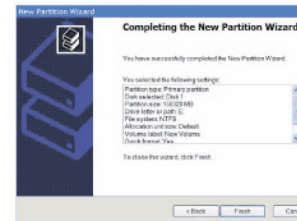
4. On the next page, choose your partition size then click Next.



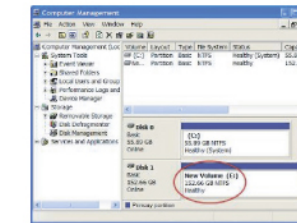
5. After that, please assign a drive letter for the new Hard Disk Drive, and go to Next.



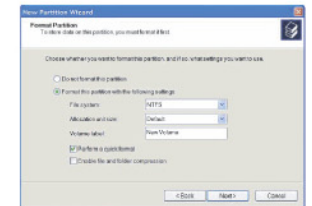
7. Confirm your setting and click Finish.



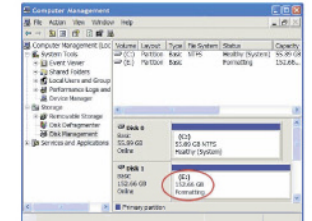
9. When the status change to Healthy, your new Hard Disk Drive is ready for use.



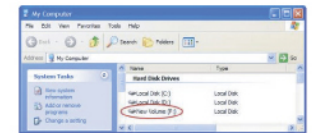
6. To format a Hard Disk Drive. Choose the NTFS as File System. Leave the Allocation unit size as default. Assign a name in Volume label. Check the Perform a quick format to reduce format time. Click Next.



8. It would show the status as Formatting.



10. Go to My Computer, your new drive should be listed there and ready for use.



Mac OS X

Note: If the warning does not show up, start at step 2.

- A warning window will pop up for new and unformatted Hard Disk Drive. Click Initialize. Skip Step 2 and continue at Step 3.
- Click Go on the desk bar and choose Utilities, click Disk Utility.



- Under the Disk Utilities, choose the new Hard Disk Drive (1) and click Partition (2). Click Options to choose format other than Mac Extended VV(3) refer to Figure 1. Choose the number of partition you want by clicking on the scroll bar (4). Name the new Hard Disk Drive (5). Choose the Format (6) refer to Figure 2. Define the Size if you want more than one partition or else, leave it as default (7). Make sure the configuration is right and click Partition (8).

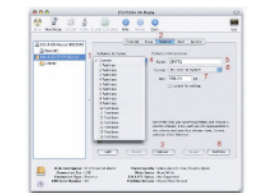


Figure 1: Three Options: Choose the partition for your Hard Disk Drive, then click OK.

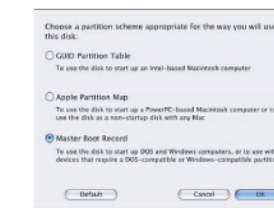
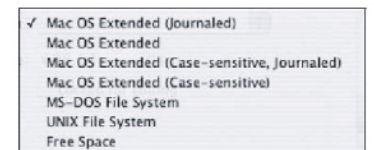


Figure 2: Six Formats: Choose the format for your Hard Disk Drive.



4. After the partitioning is done, an icon with the Name you assigned should appear on your Desktop. Just double click the icon to access the Hard Disk Drive.

