

User Manual



I-NA308

SATA to USB2.0+eSATA External Storage System

Getting Started

Thank you for purchasing ineo | I-NA308 product. ineo | I-NA308 SATA to USB2.0+eSATA External Storage System. This user manual provides step-by-step installation instructions and other important information regarding your ineo product. For the latest ineo product information and news, please visit our Web Site at <http://www.neo2tech.com>

Package Contents

I-NA308	SATA HDD to USB 2.0+eSATA
CD	YES
USB Cable	YES
eSATA Cable	YES
Power Adapter	YES
User Manual	YES
Vertical Stand	YES
Jelly Jacket	YES



System Requirements

- Hardware**
 Pentium® II, 200 MHz equivalent or newer for IBM compatible PC
 PowerPC G4, 350 MHz or newer for PowerPC-based Apple Computer Core® or newer for Intel-based Apple Computer
- Software**
 Windows ME / 98SE / 2000 / 2003 / XP / Vista
 Mac® OS X
- Note: For highest performance and reliability, ineo recommends that you install the latest service pack (SP) and updates.

Updating Your Operating System

Windows
 Go to the Start menu and select Windows updates. For more information regarding updating your system, visit <http://windowsupdate.microsoft.com>.

Macintosh
 Go to the Apple menu and select Software Update. For more information regarding updating your system, visit <http://www.apple.com/macosx>.

Handling Precautions

The products are precision instruments and must be handled with care during unpacking and installation. Drives may be damaged by rough handling, shock, or vibration. Be aware of the following precautions when unpacking your ineo external storage kit:

- Do not unpack the product until you are ready to install it.
- Do not drop or jolt the product.
- Do not move the external storage when it is powered up.

Setting Up

You will need a 3.5 inch SATA Hard Disk Drive. Carefully follow the procedure to install the Hard Disk Drive into the enclosure.

ineo | I-NA308 Front View

Hard Disk Drive Installation

- Loosen four screws from the bezel and separate the bezel from the disk mounting tray.



- Insert the SATA hard disk drive into the SATA connector on the disk mounting tray.



- Tighten up four screws from the bezel.



- Hard Disk Drive Installation Process is Completed!



Connecting the External Hard Disk Drive

Connecting the Cables

USB Interface

- Connect the Power Adapter to DC IN.
- Connect one end of the USB 2.0 cable to the USB 2.0 port at the rear of the external Hard Disk Drive.
- Connect the other end of the USB 2.0 cable to an available USB port on your computer.

eSATA Interface

- Connect the Power Adapter to DC IN.
- Connect one end of the eSATA cable to the eSATA port at the rear of the external Hard Disk Drive.
- Connect the other end of the eSATA cable to an available eSATA port on your computer.

Powering On the Drive

Press the power switch to turn on the unit. Wait 3 seconds after blue light illuminating.

Windows 2000/2003/XP/Vista

Your operating system will automatically detect the external drive after a "Found New Hardware" message pop up.

Windows 98SE/ME

Note : ineo does not provide any tech supports for Windows98 platform since Microsoft has discontinued Windows 98SE.

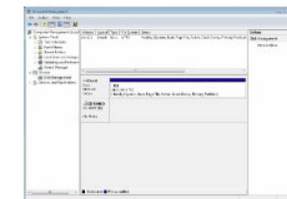
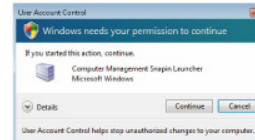
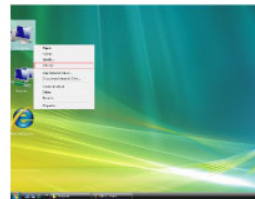
Mac OS X

Your operating system will automatically detect the external drive. Once formatted the Hard Disk Drive, the Hard Disk Drive icon will appear on the desktop.

Partition & Format the Hard Disk Drive

Startup Computer Management from VISTA

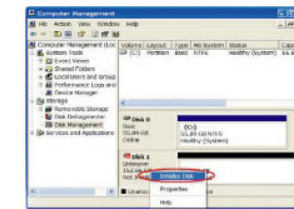
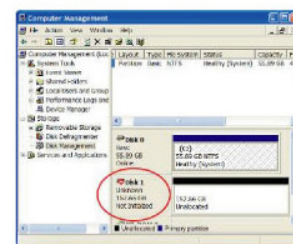
- Right click on computer and select Manage from drop down menu.
- Click on "Continue" button from pop up menu.
- The Computer Management is ready for use.



Windows XP/2000/2003/VISTA

Note : For formatted Hard Disk Drive, proceed to step 2.

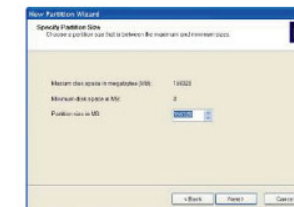
- Click the Start button and click on Control Panel, double-click the Administrative Tools, and then double-click the Computer Management.
- Click the Disk Management under Storage. Your new Hard Disk Drive should have the right capacity shown. (e.g. figure above Disk 1 is showing approximately 160GB). Right click the Disk 1, and choose Initialize Disk.



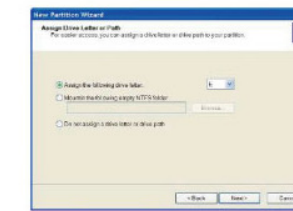
- After New Partition Wizard launched, then click Next.



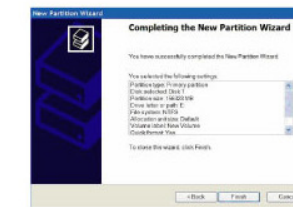
- On the next page, choose your partition size then click Next.



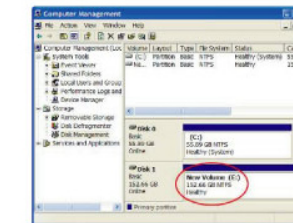
- After that, please assign a drive letter for the new Hard Disk Drive, and go to Next.



- Confirm your setting and click Finish.



- When the status change to Healthy, your new Hard Disk Drive is ready to use.



Mac OS X

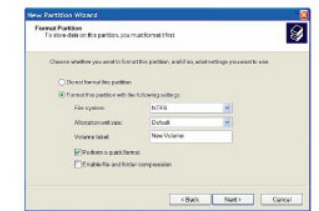
Note : If the warning does not show up, start at step 2.

- A warning window will pop up for new and unformatted Hard Disk Drive. Click Initialize. Skip Step 2 and continue at Step 3.

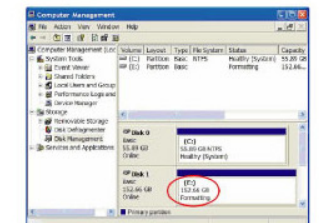


- Under the Disk Utilities, choose the new Hard Disk Drive (1) and click Partition (2). Click Options to choose format other than Mac Extended (3) refer to Figure 1. Choose the number of partition you want by clicking on the scroll bar (4). Name the new Hard Disk Drive (5). Choose the Format (6) refer to Figure 2. Define the Size if you want more than one partition or else, leave it as default (7). Make sure the configuration is right and click Partition (8).

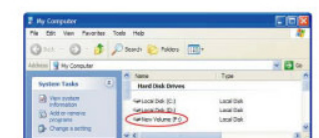
- To format a Hard Disk Drive. Choose the NTFS as File System. Leave the Allocation unit size as default. Assign a name in Volume label. Check the Perform a quick format to reduce format time. Click Next.



- It would show the status as Formatting.



- Go to My Computer, your new drive should be listed there and ready to use.



- Click Go on the desk bar and choose Utilities, click Disk Utility.



Figure 1 : Three Options Choose the partition for you Hard Disk Drive. Click OK.



Figure 2: Six Formats: Choose the format for your Hard Disk Drive.

- Mac OS Extended (Journaled)
- Mac OS Extended
- Mac OS Extended (Case-sensitive, Journaled)
- Mac OS Extended (Case-sensitive)
- MS-DOS File System
- LINUX File System
- Free Space

- After the partitioning is done, an icon with the Name you assigned should appear on your Desktop. Just double click the icon to access the Hard Disk Drive.

