



User Manual



I-NEC01 eSATA Express Card

Getting Started

This user manual provides step-by-step installation instructions and other important information regarding your ineo product. For the latest ineo product information and news, visit our Web Site at <http://www.neo2tech.com>

Package Contents

I-NEC01	Express Card
e-SATA Cable	Yes
User Manual	Yes
CD	Yes



System Requirements

Hardware

Pentium® II, 200 MHz equivalent or newer for IBM compatible laptop
PowerPC G4, 350 MHz or newer for PowerPC-based Apple Computer Core® or newer for Intel-based Apple Computer laptop

Software

Windows 98SE / 2000 / 2003 / XP / Vista
Mac® OS X v.10.1 and later

Note: For highest performance and reliability, ineo recommends that you install the latest service pack (SP) and updates.

Updating Your Operating System

Windows

Go to the Start menu and select Windows updates. For more information regarding updating your system, visit <http://windowsupdate.microsoft.com>.

MAC

Go to the Apple menu and select Software Update. For more information regarding updating your system, visit <http://www.apple.com/macosx>.

Handling Precautions

The ineo products are precision instruments and must be handled with care during unpacking and installation. Drives may be damaged by rough handling, shock, or vibration. Be aware of the following precautions when unpacking your ineo express card kit:

- Do not unpack the product until you are ready to install it.
- Do not drop or jolt the product.
- Do not remove the express card when it is copying data.

Function Description



Setting Up

Please carefully follow the procedure to install the express card.

ineo | I-NEC01 Front View



Express Card Installation

1. Please remove protection cover from the express card slot of laptop.



2. Prepare install express card to a slot.



3. Please slide the express card into slot.

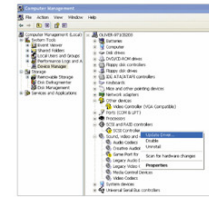


4. Once Express Card installed, then you can connect a enclosure to express card.

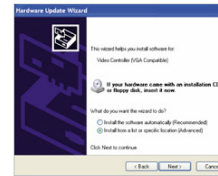


Driver Installation

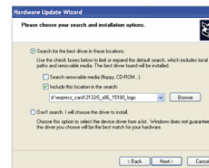
1. Please run Computer Management and select RAID Controllers from other devices. Right click on RAID Controllers and select update driver from pup up menu.



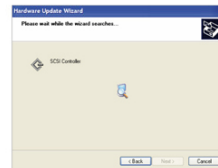
2. Please select "Install from a list or specific location" and press Next button.



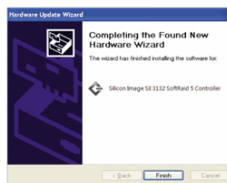
3. Please select "Include this location the search" and press Browse button to identify the location of file path.



4. Your computer is going to setup driver



5. When the driver has been installed successfully, the express card is ready to use.



RAID 0/1

If you need the function of RAID0 or RAID1, please firstly connect your external enclosures to each e-SATA port and reboot your computer. Please press F4 or <Ctrl>+5> when you see the following screen is display.



Please backup your data before running the following procedure, all of your data will be deleted after RAID configuration has been set. Now you can follow the instruction to create RAID set.



Note: If you need latest firmware version, please download from the official web site of Silicon Image. <http://www.siliconimage.com/support/index.aspx?pid=0&cid=0&>

Warranty Information

Attention: ineo Technology, Inc. is not responsible for consequential damages, including loss or recovery of data.

Obtaining Service

ineo Tech values your business and always attempts to provide you the very best of service. If the Product requires maintenance, either contact the detaller from whom you originally purchased the Product or visit our product support Web site at <http://www.neo2tech.com> for information on how to obtain a service or, a Return Material Authorization (RMA). If it is determined that the Product may be defective, you will be given an RMA number and instructions for Product return. An unauthorized return (i.e. one for which an RMA number has not been issued) will be returned to you at your expense. Authorized returns must be shipped in appropriate shipping container prepaid and insured, to the address provided on your return paperwork. Your original box and packaging materials should be kept for storing or shipping into Tech product. Your warranty will be void if your returned product is shipped in anything other than the original packaging or ineo Tech approved materials. To conclusively establish the period of warranty, check the warranty expiration (serial number required) via <http://www.neo2tech.com>. ineo Tech is not liable lost data, regardless of the cause, recovery of lost data, or data contained in any Product placed in its possession.

One Year Limited Warranty

ineo Tech warrants that the Product, in the course of its normal use, will be free from defects in material and workmanship for a period of one (1) year and will conform to ineo Tech specification therefore. This limited warranty period shall commence on the purchase date appearing on your purchase receipt. ineo Tech shall have no liability for any Product returned if ineo Tech determines that the Product was stolen from ineo Tech or that the asserted defect a) is not present, b) cannot reasonably be rectified because of damage occurring before ineo Tech receives the Product, or c) is attributable to misuse, improper installation, alteration (including removing or obliterating labels and opening or removing external enclosures, unless authorized to do so by ineo Tech), accident or mishandling while in the possession of someone other than ineo Tech. Subject to the limitations specified above, your sole and exclusive warranty shall be, during the period of warranty specified above and at ineo Tech's option, the repair or replacement of the Product. The foregoing warranty shall extend to repaired or replaced Products for the balance of the applicable period of the original warranty or ninety (90) days from the date of shipment of a repaired or replaced Product, whichever is longer. The foregoing limited warranty is ineo Tech's sole warranty and is applicable only to products sold as new. The remedies provided herein are in lieu of a) any and all other remedies and warranties, whether expressed, implied or statutory, including but not limited to, any implied warranty of merchantability or fitness for a particular purpose, and b) any and all obligations and liabilities of ineo Tech for damages including, but not limited to accidental, consequential, or special damages, or any financial loss, lost profits or expenses, or lost data arising out of or in connection with the purchase, use or performance of the Product, even if ineo has been advised of the possibility of such damages. This warranty gives you specific legal rights, and you may also have other rights which vary from state to state.

ineo Technology, Inc. SHALL HAVE NO LIABILITY TO YOU UNDER THIS LIMITED WARRANTY IF THE PRODUCT IS INSTALLED AND USED IN A MANNER NOT SPECIFIED OR DESCRIBED IN THE PRODUCT SPECIFICATIONS OR DESCRIPTION. THE PRODUCT HAS BEEN MODIFIED OR ALTERED IN ANY WAY BY ANY PARTY OTHER THAN ineo TECH, OTHER THE FAILURE OF THE PRODUCT TO CONFORM TO ITS SPECIFICATIONS CAN BE ATTRIBUTED TO CAUSES THAT NOT THE RESPONSIBILITY OF ineo TECH.

neo TECH MAKES NO WARRANTY OR REPRESENTATION, EXPRESSED, IMPLIED, OR STATUTORY, WITH RESPECT TO ITS PRODUCTS OR THE CONTENTS OR USE OF THIS DOCUMENTATION AND ALL ACCOMPANYING SOFTWARE, AND PARTICULARLY DISCLAIMS ITS QUALITY OR PERFORMANCE FOR ANY PARTICULAR PURPOSE.

ineo TECH MAKES NO GUARANTEE THAT ALL DATA STORED ON ineo TECH PRODUCTS IS ALWAYS SECURE WITHOUT ANY RISKS OF DATA LOSS. ineo TECH REMINDS YOU TO BACK UP THE DATA PERIODICALLY. UNDER NO CIRCUMSTANCES SHALL ineo TECH BE LIABLE IN ANYWAY TO THE USER FOR DAMAGES, INCLUDING ANY SAVINGS, LOST PROFITS OR OTHER INCIDENTAL OR CONSEQUENTIAL DAMAGES ARISING OUT OF THE USE OF, OR INABILITY TO USE ineo TECH PRODUCTS OR RESULTING LOSS OF DATA FROM SUCH USE.